

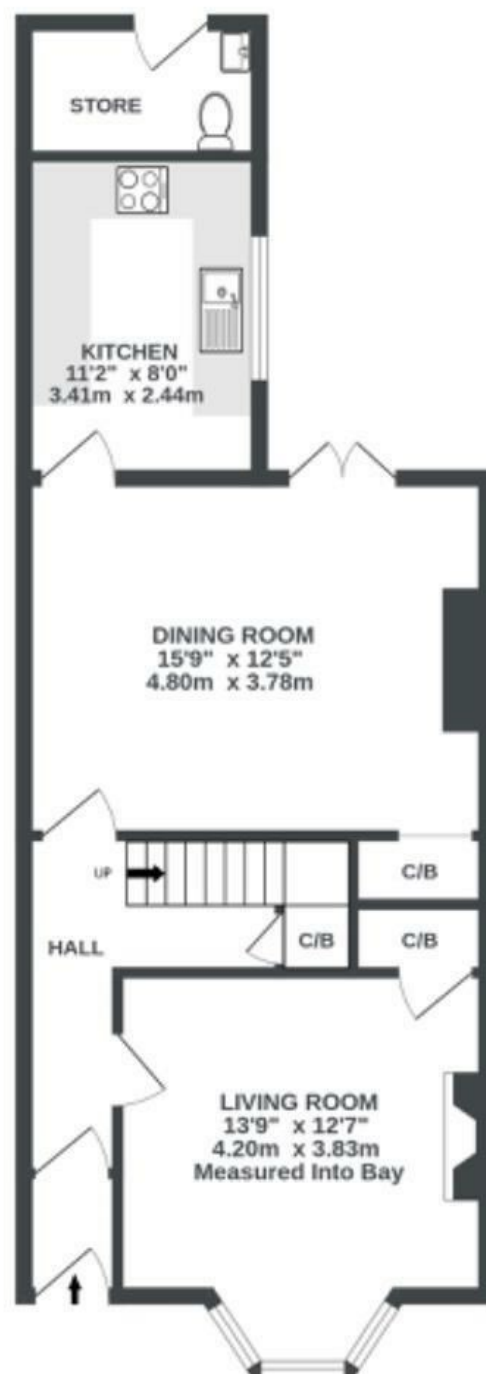
# Green Street

## TOTTERDOWN

APPROXIMATE FLOOR AREA  
103.1 SQM / 1110 SQFT



GROUND FLOOR  
575 sq.ft. (53.4 sq.m.) approx.



1ST FLOOR  
535 sq.ft. (49.7 sq.m.) approx.



Illustrations are for reference purposes only, measurements are approximate, not to scale.

**Boardwalk**

# Green Street , BRISTOL



£435,000



2 Bedrooms



Bristol, BS3

4118



1 Bathrooms

*"We love the feeling of space inside our home with its high ceilings and generously sized rooms. We have enjoyed decorating our home and filling it with colour - including painting our rear wall lemon yellow which makes our kitchen and dining room glow. Temple Meads and the city centre are within easy walking distance. Victoria Park is on our doorstep and we have pubs, restaurants and bakeries a stone's throw away. We have hot air balloons flying over us in the summer which is pretty special."*

